

**SONY**

Hi-Fi Products  
Service Bulletin

Sony Service Company Technical Services  
A Division of Sony Corporation of America  
Sony Drive, Park Ridge, New Jersey 07656

**Model:** VARIOUS CDP

**No. 182**

**Subject:** Jig to Facilitate Troubleshooting  
of CDP Carousel Units

**Date:** March 29, 1991

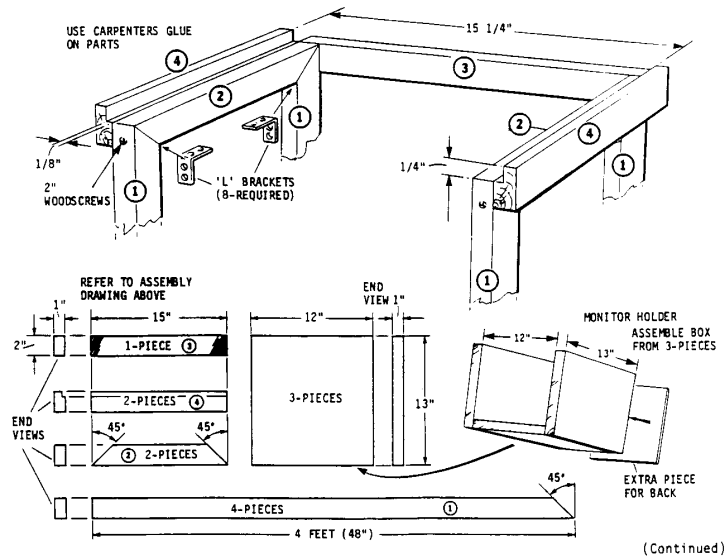
**Symptom:**  
(\*\*\*)

Troubleshooting and electronic problem on MDP units is difficult because the unit cannot be tilted.

**Solution:** Build a jig to facilitate troubleshooting.

Starting from a scope stand, attach a few wood pieces (1" x 2"); building a frame that holds the unit about 15" above the scope and the meter. The stand also holds a KV-8AD10 TV monitor and one pair of self-powered speakers SRS-67. The jig can then monitor audio out, video out, and RF out.

Refer to the pictures shown.



Reference: FPR L2160

PRINTED IN U.S.A.  
CSA-13391-11

CSA-13 HP

COMPLETED TROUBLESHOOTING JIG

